

# St. Thomas

FEBRUARY 27, 2022 — EIGHTH SUNDAY IN ORDINARY TIME



**JESUS SAID:**

“A good tree does not bear rotten fruit, nor does a rotten tree bear good fruit. For every tree is known by its own fruit.”

~ Luke 6:43 - 44



## Letter from the Bishop



Dear Friends,

When we begin Lent on Ash Wednesday, we will also take up a collection for the Church in Central and Eastern Europe.

Your support of this collection benefits such initiatives as the Tabita program, which was developed by Caritas Belarus in 2018. This program assists people with disabilities by bringing them together to socialize, share their experiences and pray in an environment where volunteers, as well as a volunteer coordinator and a part-time social worker, are available to

assess and assist participants with their physical, social, psychological and spiritual needs.

When you support the Collection for the Church in Central and Eastern Europe, you help programs like Tabita break down the walls of isolation separating people with disabilities from the community and from each other.

Thank you for your help to restore the Church and build the future in Central and Eastern Europe.

Paz y bien,

**Most Reverend Ronald A. Hicks**

*Bishop of Joliet*

## Revisions to Diocese of Joliet COVID-19 Mitigation Protocols

With the state of Illinois lifting the mask mandate for indoor public spaces on February 28, the Diocese of Joliet will revise its protocols and lift restrictions. The following guidelines affect all church and office activities; schools and religious education continue to follow their own requirements.

### Effective February 28:

- Masks are recommended but not required in church and office settings.
  - Everyone should be respectful of others who may or may not choose to wear masks.
  - If possible, parishes should consider designating special seating areas for those who wish to maintain additional precautions such as social distancing or mask-wearing.
- Communion shall still be provided only via the host.
  - Communion in the hand is the norm.
  - Pastors have discretion as to whether or not Communion shall be provided on the tongue at their parish.
    - If Communion is provided on the tongue, the previous protocols are still required: Sanitize between communicants and dispense only after those who have received in the hand are finished.
  - There is no Communion in the cup.
- Holy water may return to the fountains.
- Collection baskets may be passed through the congregation.
- Food at church activities is up to the pastor's discretion.
- Congregation may make whatever Sign of Peace they are comfortable with.
- Restrictions are removed from musicians, but masks are still recommended.
- Previously issued isolation and quarantine procedures for close contact or illness remain in effect.
- For now dispensation still remains in place.

As always if there is a change to the general COVID-19 levels, we may reinstate protocols as necessary to keep everyone safe.



## Liturgy Schedule

### Daily

Mass: 8:30 am, Monday–Saturday

### Wednesdays

Communion Service: 6:30 am

### Weekend

Saturday Mass of Anticipation: 4:30 pm

Sunday: 8:00 am, 9:30 am and 11:15 am

*The Saturday 4:30 pm Mass will be livestreamed with an outdoor communion option.*

## Reconciliation

St. Thomas offers the Sacrament of Reconciliation before the Saturday 4:30 pm Mass. Reconciliation will be from 3:30–4:15 pm in the Reconciliation Room. Please check the website for details.

## Presider Schedule March 5–6

### Saturday, March 5

4:30 pm: Fr. Joseph Kappilumakkalr

### Sunday, March 6

8:00 am: Fr. Bob Colaresi

9:30 am: Fr. Joseph Kappilumakkal

11:15 am: Fr. Matt Lorenz

*Presider schedule is subject to change.*

## Welcome Guests and Visitors!

We're so glad you're here and invite you to walk the path of faith with us. St. Thomas strives to provide a spiritual home where all are welcome, where the healing, reconciling, liberating love of God is shared by all. Join us!

## Would you like to become a parishioner?

Call Maureen Januszewski in the General Office at 630.355.8980, x100.

## Calling All Men!

Would you be interested in learning more about membership in our St. Thomas Knights of Columbus council? For an introduction, contact David Yelaska at [cseaaskme@gmail.com](mailto:cseaaskme@gmail.com).

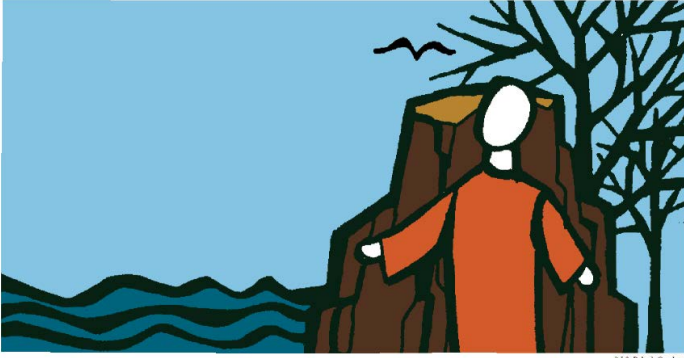


## Church Office and Building Hours

St. Thomas offices are open 8:30 am–4:30 pm Monday through Friday. The reception desk in the Gathering Area is staffed 9:00 am–8:00 pm Monday–Thursday; 9:00 am–4:30 pm Friday; and 9:00 am–1:00 pm Saturday.

Schedule subject to change. You can call to check on times before coming. Please enter through Door A.

# Worship Commission — Liturgy and Music



## Eighth Sunday in Ordinary Time

February 27, 2022

*Every tree is known by its own fruit. For people do not pick figs from thornbushes, nor do they gather grapes from brambles.*

— Luke 6:44

## Readings for Today

**First Reading** — One's speech shows the bent of one's mind. Praise no one before he or she speaks (Sirach 27:4-7).

**Psalms** — Lord, it is good to give thanks to you (Psalm 92).

**Second Reading** — We are given victory over death through Jesus. In the Lord our labor is not in vain (1 Corinthians 15:54-59).

**Gospel** — A good person produces good, an evil person produces evil. The mouth speaks from the goodness of the heart (Luke 6:39-45).

The English translation of the Psalm Responses from Lectionary for Mass © 1969, 1981, 1997, International Commission on English in the Liturgy Corporation. All rights reserved.

## Readings for the Week

**Monday:** 1 Pt 1:3-9; Ps 111:1-2, 5-6, 9, 10c; Mk 10:17-27

**Tuesday:** 1 Pt 1:10-16; Ps 98:1-4; Mk 10:28-31

**Wednesday:** Jl 2:12-18; Ps 51:3-6ab, 12-14, 17; 2 Cor 5:20 — 6:2; Mt 6:1-6, 16-18

**Thursday:** Dt 30:15-20; Ps 1:1-4, 6; Lk 9:22-25

**Friday:** Is 58:1-9a; Ps 51:3-6ab, 18-19; Mt 9:14-15

**Saturday:** Is 58:9b-14; Ps 86:1-6; Lk 5:27-32

**Sunday:** Dt 26:4-10; Ps 91:1-2, 10-15; Rom 10:8-13; Lk 4:1-13

## Liturgy Schedule and Mass Intentions

*Please note, all the weekend intentions will be read at all Masses.*

### Monday, February 28, 2022

*Weekday*

8:30 am †Karen Batten, by Mary Bartusiak

### Tuesday, March 1, 2022

*Weekday*

8:30 am †Joe Galvin, by Audrey Easton

### Wednesday, March 2, 2022

*Ash Wednesday*

8:30 am †Toni Casey, by Anne and Vince Kelly

12:00 pm Service

4:30 pm Service

7:00 pm Visa Approval for Rajesh, by Maneesha Basani

### Thursday, March 3, 2022

*Thursday after Ash Wednesday*

8:30 am †Michael Ingoldsby, by Ann Mitchell

### Friday, March 4, 2022

*Friday after Ash Wednesday*

8:30 am †Jerry Pagorek, by Augusta Diana

### Saturday, March 5, 2022

*Saturday after Ash Wednesday*

8:30 am The Unemployed

4:30 pm *Mass of Anticipation*

†Tom Ferguson, by Patti Dougherty

†Raul Madarang, by Mayoralgo Family

### Sunday, March 6, 2022

*First Sunday of Lent*

8:00 am Thanksgiving for Ryan Allam, by Maneesha Basani

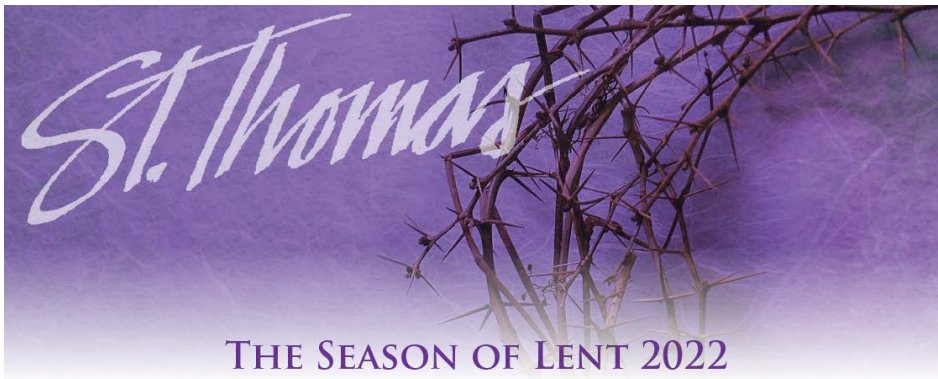
9:30 am †Joe Galvin, by Jim and Mary Jo Breen

†Maureen Bergman, by Karen Currier

11:15 am †Thomas Brauer, by Kathy Singer and Family

## Reflecting on the Readings ...

On this Sunday before Lent, the readings challenge us to be mindful of our thoughts, words and deeds. They call us to first judge ourselves before we judge others. May God shake us from our sins of apathy and judgment, so as to provide a path to enter more deeply into the Lenten journey before us.



## Ash Wednesday is March 2

To commence our Lenten journey, we Christians are reminded of from where we come through the distribution of ashes. Listed below are several opportunities to worship as community and receive ashes.

<b>6:30 am</b>	Communion Service
<b>8:30 am</b>	Mass
<b>12:00 pm</b>	Liturgy of the Word
<b>4:30 pm</b>	Liturgy of the Word (with a family oriented focus)
<b>7:00 pm</b>	Mass

St. Thomas will also offer a "drive-thru" option for the distribution of ashes from 9:00 am to 4:00 pm. Simply drive up to the Gathering Area Doors and a minister will distribute ashes to you without having you exit your vehicle.

## Stations of the Cross

*Fridays of Lent*

7:00 pm | Church

The Way of the Cross has always been a powerful and popular part of the faith tradition and devotional life for Catholics throughout the ages. The early practice of Christians attempting to retrace and walk the path of Jesus has been a treasured way to commemorate the Passion and Death of Christ.

This year, St. Thomas the Apostle is adding Adoration of the Blessed Sacrament to the Stations of the Cross. Beginning worship with the Exposition of the Eucharist, Stations of the Cross will provide prayer for the period of Eucharistic Adoration. The evening will close with Benediction.

### March 4, March 18, April 1

Through the simple, intimate, yet powerful words of *Everyone's Way of the Cross*, those on the journey are invited to grow closer to Christ by embracing the mystery of suffering in the world. Music provides a transitional accompaniment between stations.

### March 11, March 25, April 8

The *Scriptural Stations of the Cross* are based on those celebrated by Saint Pope John Paul II on Good Friday in 1991. They are an alternative to the traditional stations as a way of more deeply reflecting on the Scriptural accounts of Christ's Passion. Prayerful silence accompanies the transition between stations.

*For the complete list of all of the activities during Lent at St. Thomas, please click [here](#) for the insert in this weekend's bulletin or the St. Thomas website at [stapostle.org](http://stapostle.org).*

## Black History Month

*Throughout the month of February, St. Thomas the Apostle celebrates Black History Month. Each week of February, the parish bulletin contains an insert that highlights the life of a Black individual who has lived the life of a Christ, paired with an African-American Spiritual that reflects the worship tradition of the Black church.*

### I Dream a World by Langston Hughes

*I dream a world where man*

*No other man will scorn,*

*Where love will bless the earth*

*And peace its paths adorn.*

*I dream a world where all*

*Will know sweet freedom's way,*

*Where greed no longer saps the soul*

*Nor avarice blights our day.*

*A world I dream where black or white,*

*Whatever race you be,*

*Will share the bounties of the earth*

*And every man is free,*

*Where wretchedness will hang its head*

*And joy, like a pearl,*

*Attends the needs of all mankind--*

*Of such I dream, my world!*



St. Thomas the Apostle Catholic Church has a tradition of celebrating Black History Month throughout the month of February. Our parish mission states that:

**“We believe each life is sacred, each person gifted by God. We value diversity in our midst.”**

We welcome all people into the Body of Christ. We celebrate all Children of God.

Below find a biography of a Black individual who has made a contribution to our world, overcome obstacles, and provide an example of living out the Gospel mission.

**Singer Mahalia Jackson**— Born in 1911, Mahalia Jackson began her musical career as a young girl singing in her Baptist Church in New Orleans, LA. She moved to Evergreen Park, IL and joined another church choir and became a featured soloist due to her mature, rich, contralto voice. Being raised in a faith-filled family, Jackson was only permitted to listen to records of gospel music, nothing secular. She would later credit her upbringing with her reason to continue only singing sacred music as a performer—as singing praise to the Lord was the only authentic reason to sing. She participated in a cross-country gospel tour in the 1930's and recorded a few songs which later became hits. Jackson's rise to fame continued, and so did her conviction to use her God-given gift in only 'appropriate' venues. She began to break racial barriers and became more active in the Civil Rights movement - singing to a racially integrated audience at Carnegie Hall in 1950. Jackson continued to record and release records that became international hits throughout the 1950's and 1960's. Some of her most memorable performances include singing at the inauguration of President John F. Kennedy, performing at the March on Washington in 1963, and at her friend, Rev. Dr. Martin Luther King Jr.'s funeral. Jackson died in 1972 and is remembered for her impassioned delivery of sacred music and commitment to the use of her gift to get *Just a Closer Walk with Thee* — our Lord and Savior, Jesus Christ.



Lively music ministry is a way that St. Thomas the Apostle parish engages in worship. One of the diverse styles heard during the liturgy throughout Black History Month is the Spiritual.

A spiritual is a type of religious folksong that is most closely associated with the enslavement of African people in the American South. Spirituals began as an oral tradition passed from one slave generation to the next. Often rooted in biblical stories, which were memorized then translated into song, spirituals described the extreme hardships endured by African Americans who were enslaved. Music, religion, and everyday life are inseparable in the spirituals, and through them, religious ideals were infused into the activities of everyday life. Spirituals also encompass the work songs and plantation songs that evolved into the blues and gospel songs in church.

## Just a Closer Walk with Thee

1. I am weak but thou art strong;  
 2. Through this world of toil and snares,  
 3. When my fee - ble life is o'er,  
 Refrain: *Just a clos - er walk with thee,*

Je - sus, keep me from all wrong;  
 If I fal - ter, Lord, who cares?  
 Time for me will be no more;  
 Grant it, Je - sus, is my plea;

I'll be sat - is - fied as long  
 Who with me my bur - den shares?  
 Guide me gen - tly, safe - ly o'er  
 Dai - ly walk - ing close to thee,

As I walk, let me walk close to thee.  
 None but thee, dear Lord, none but thee.  
 To thy king - dom shore, to thy shore.  
 Let it be, dear Lord, let it be.

Text: Anonymous  
 Tune: CLOSER WALK, 777 8; anonymous

A traditional gospel song, with probable origins dating back to southern African-American churches of the nineteenth century, *Just a Closer Walk With Thee* is perhaps the most frequently played number at traditional New Orleans jazz funerals. Its title and lyrics may allude to a passage from Corinthians which states, "we walk by faith, not by sight".

# Faith and Formation Commission — Adult

## Participate in the Synod

It's here! The questionnaire for submitting input on the topics raised for the upcoming Synod of Bishops is now available on the parish website at [stapostle.org](http://stapostle.org). Click **here** to take the survey.

The survey is completely anonymous and all answers are welcome. Pope Francis has urged us to gather input from all people — Catholic, Christian, interfaith partners, non-practicing Catholics, agnostics and atheists.

How can the Church meet people wherever they are, whether that is on the path of faith, seeking a path for their lives or even skipping the path altogether? After you've filled out the questionnaire yourself, talk with — listen carefully to — everyone you know about one or more of these topics and note their responses. Then forward them to Chari Rosales at [crosales@stapostle.org](mailto:crosales@stapostle.org).

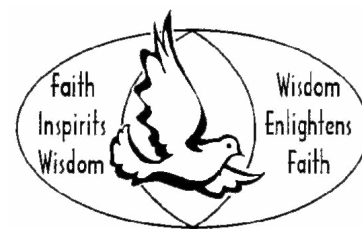
Our parish needs YOU. Our diocese needs YOU. Pope Francis needs YOU. Please answer the call.



## C.A.R.E. CORNER

Let's resume our series on saints with more of our memorable early Church leaders. St. Athanasius was born around the year 297 in Alexandria, Egypt into a Christian family. He attended the Council of Nicaea in 325 as a secretary and assistant to Bishop Alexander of Alexandria. This Council condemned the

heretical teachings of the priest Arius who was teaching that Jesus was not divine. This was the Church Council that gave us the Nicene Creed, declaring Jesus as "consubstantial" with the Father, using the language proposed by Athanasius. Ultimately Athanasius succeeded Alexander as Bishop in Alexandria in the year 328.



Athanasius was known to be a great theologian and preeminent defender of orthodoxy. Because of that, he seems to have taken on the world. He had to stand strong against powerful and influential leaders within the Church, as well as several Roman emperors bringing pressure to bear from outside the Church. Athanasius had to flee 5 times from Arius and his political allies. But while in exile he wrote about and spread the ideal of monasticism, as well as writing about the life of Anthony of the Desert. And he also wrote a letter in 367 listing the 27 books of the New Testament. Athanasius died in Alexandria in 373, having served as beloved Bishop for about 45 years. He is known as a Father of orthodoxy, a champion of fortitude in the ongoing struggle to promote and cling to the truth. And he still holds up as a great role model for those searching for truth.

## Parish Mission Coming Soon!

Ready for a spiritual pick-me-up? Make plans now to attend the upcoming Parish Mission based on the beloved Prayer of St. Francis, presented by Franciscan Father Ed Shea, OFM:

**Lord, Make Me a Channel of Your Peace**  
**March 27–29, 2022**

**Sunday, March 27 | 7:00 pm** "Where there is Doubt ... Faith"  
**Monday, March 28 | 7:00 pm** "Where there is Injury ... Pardon"  
**Tuesday, March 29 | 7:00 pm** "Where there is Despair ... Hope"

Watch for more details to follow!

## Congratulations to our 2022 Confirmands!

Luis <i>Xavier</i> Alfaro Alvarez	Kylie <i>Jane</i> Hallissey	Cara <i>Joan</i> Nagel
Michelle <i>Catherine</i> Amezcuita	Brooke <i>Angela</i> Hannemann	Jaxon <i>Jude</i> Norwick
Sofia <i>Gianna</i> Bailey	Liam <i>Damian</i> Hannemann	Nicholas <i>Christopher</i> Patt
Patrick <i>Francis</i> Baldinger	Kaylee <i>Francis</i> Hansen	Quinn <i>Thomas</i> Phelan
Lillie <i>Clare</i> Bouska	Will <i>Paul</i> Harding	Henry <i>Gregory</i> Rao
Rachel <i>Clare</i> Boytim	Jack <i>Francis</i> Healy	Natalie <i>Brigid</i> Richards
Sean <i>Sebastian</i> Brennan	Kristina <i>Rosalia</i> Hofmann	Bryce <i>Genevieve</i> Rioux
Gabriel <i>Phillip</i> Bresnick	Nicole <i>Faith</i> Hofmann	Hannah <i>Mary</i> Robertz
Shannon <i>Joan</i> Brown	Martin <i>Ignatius</i> Howley	Jack <i>Francis</i> Robertz
Gregory <i>Gregory</i> Burgess	Stephen <i>Kevin</i> Hribal	Christopher <i>Anthony</i> Rojas
Abigail <i>Adelaide</i> Cetera	Zachary <i>George</i> Hurd	Sophia <i>Teresa</i> Roszkowski
Giada <i>Rose</i> Colvin	Anna <i>Francis</i> Keeler	Dominic <i>Francis</i> Sanchez
Lauren <i>Sebastian</i> Cook	Zoe <i>Cecilia</i> Kirkman	Caitlin <i>Cecilia</i> Scharm
Connor <i>Francis</i> Cook	Dylan <i>Joseph</i> Kosloski	Santiago <i>Guadalupe</i> Soto
Alexander <i>Sebastian</i> Danehl	Sam <i>Sebastian</i> Krebs	Hannah <i>Elizabeth</i> Steffgen
Allison <i>Christina</i> Davids	Sidney <i>Kiara</i> Kusher	Tanner <i>Anthony</i> Stumpenhorst
Luke <i>Paul</i> Donaldson	Ryan <i>Anthony</i> Lee	Sean <i>Peter</i> Tenebehn
Griffin <i>Stephen</i> Ferguson	Lucas <i>Abel</i> Marschitz	Juliana <i>Andrew</i> Williams
Kaitlyn <i>Cecelia</i> Garlough	Alexa <i>Hubertus</i> Maul	Kyle <i>Patrick</i> Zediker
Grace <i>Gemma</i> Garretson	Joey <i>Christopher</i> McCoy	
Keira <i>Louise</i> Hallissey	Delilah <i>Olympias</i> Meerman	



### Alive in You – High School Youth Ministry Mission Trip

Registrations are now open for the Alive in You Mission Trip to Knoxville, Tenn., June 28-July 3, 2022.

Teens come share your faith through action on our Alive in you Mission Trip. Incoming freshmen to outgoing seniors eligible to sign up. Young Adults are welcome, but must take Protecting God's Children in order to go. Typical work may include: painting, simple building projects, landscaping, working at a food pantry or social service organization, working with children at a low income day care, etc. Chaperones needed.

Click [here](#) for the registration forms. Contact Dorothy Grantham for more information at 630.852.3303, x117 or [ym@stapostle.org](mailto:ym@stapostle.org).

### HS Youth Ministry Calendar at a Glance

**Thursday, March 3**

*LIFE Community Night* | 6:30 pm

**Thursday, March 10**

*LIFE Community Night* | 6:30 pm

**Friday, March 18**

*Online Journey Retreat*

# Faith and Formation Commission — Youth

## Important Dates

### ELEMENTARY RE

**March 1, 8**

Tuesday elementary RE classes meet

**February 26 and March 12**

Saturday elementary RE classes meet

### MIDDLE SCHOOL RE

**February 28, March 7, 14, 21**

Monday middle school RE classes meet.

**February 26, March 12.19**

Saturday middle school RE classes meet.



## Teens with Character

Middle school students ... Teens with Character will meet Sunday, March 13, from 4:30–6:00 pm at St. Thomas.

Games, faith sharing and checking in with each other are all part of the Teens with Character experience. We would love to see you!

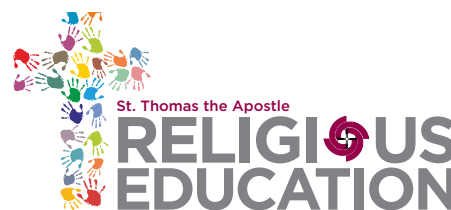
## Question of the week ...

How is your life like a fruit tree bearing good fruit?



## First Communion Prayer Service

The March First Communion Family Prayer Service is “It’s About Celebrating in the Breaking of the Bread.” The prayer service is Thursday, March 10 at 7:00 pm. Please see email to RSVP for the prayer service. Please RSVP 24 hours before the event. Please bring your “My Mass Booklet” to the prayer session.



## Girl Scout Mass

Are you a Girl Scout? The Girl Scout Mass is on Sunday, March 6, 2022, at 9:30 am. Please contact Lorraine Katz at lkatz@stapostle.org to get involved.

## Middle School Families Invited to Come Together for Mass

Middle school students and their families are invited to a special celebration of Mass on Sunday, March 6, at 3:30 pm. Fr. Matt Lorenz will be the presider and homilist. Help is needed with this special liturgy. Middle school students can volunteer for various ministry roles by clicking [here](#).

Come, pray and celebrate with us!



## Middle School Mission Trip

Are you ready for an adventure? Middle school youth are invited to be a part of a Week of Hope mission trip experience in Kenosha, Wis., from June 19–24, 2022. The Week of Hope experience is a community service mission trip where young people serve alongside seasoned local ministries and nonprofits to make a lasting difference through meaningful community service. After each day of service, the fun continues with themed days, movie nights, lip-sync battles, bedtime stories, group games and much more!

The cost for Week of Hope is \$286. Week of Hope registration forms are available on the St. Thomas website. Don’t delay ... register as soon as possible by clicking [here](#)!

The Week of Hope experience is provided by Group. The Group mission trip team dedicates extensive time and energy to create a Jesus-centered program experience through morning and evening programs, crew devotions and youth group devotions. For more information about Group, go to [www.groupmissiontrips.com](http://www.groupmissiontrips.com).

## Ash Wednesday Family Opportunities

On Ash Wednesday, March 2, there will be a family prayer service with the distribution of ashes. This service will take place at 4:30 pm. Families are invited to attend the service together as a prayerful way to begin their Lenten journey.

## Ash Wednesday Playlist Signed with Ashes

Beginning Ash Wednesday, the Church embarks on a 40-day journey of prayer, fasting and almsgiving as a way to heed the call to change our hearts. If you are searching for a way to begin the journey, check out some of the resources on the Ash Wednesday playlist, Signed with Ashes. The playlist, on the St. Thomas website, contains links to videos, articles and activities to make the start of Lent more meaningful for you and your family



## Living Stations of the Cross

Middle school students are invited to be part of the Living Stations of the Cross prayer service Good Friday, April 15, at 12:00 pm. The Stations are prayerfully 'acted out' with still poses. This is an opportunity to come to a deeper understanding of the gift of the Christ's ultimate sacrifice for us. Practices will be held weekly beginning in mid-March. The day and time of practices will be decided based on the availability of the Stations volunteers. If you are interested or would like more information, contact Peggy Goralski at pgoralski@stapostle.org or 630.355.8980, x123.

## Do-At-Home Family Faith Activity

Middle school families, if you are looking for a special way to mark the 40 days of Lent, consider the 'do-at-home' family faith activity. Supply packets for the activity will be available for pickup from the Religious Education Office starting March 1. This packet will contain the supplies needed for a project that will help to mark the 40 days of Lent in a special way for your family. Packets need to be reserved. To reserve your packet of supplies, contact Peggy Goralski at pgoralski@stapostle.org or 630.355.8980, x123.



## Big Shout Out!

A BIG shout out goes to Mary Latham (@moregoodtoday) for sharing herself and her amazing journey in search of the 'More Good' in each of the 50 states.

Click [here](#) to watch a recording of Mary's presentation.

# Service Commission — Outreach and Social Justice



## Stamp Out Loneliness Help Incarcerated Women Connect with Their Families

Each year Companions Journeying Together (CJT) sends Mother's Day cards to incarcerated women in jails and prisons throughout Illinois. CJT provides a forum to personally and positively affect the emotional, spiritual and social lives of these women and their families.

Companions Journeying Together, Inc. does not need cards for the 2022 Mother's Day project. What is needed are postage stamps. There will be a collection box in the Gathering Area. Return all stamp donations by Monday, March 7.



## Thank You, St. Thomas Care Pantry

A Care Pantry guest sent the following note.

*"To the Entire Care Pantry Team: Thank You! God sees your work."*



## Think Spring Think Indoor Golf Helping Those in Need

The St. Thomas Knights of Columbus are sponsoring the social event of the year (so far) at Top Golf in Naperville. Net proceeds will benefit St. Thomas Cares and the Care Pantry, providing support to our neighbors in need.



The event is Sunday, March 13 from 1:00–4:00 pm. What better way to help others and have fun at the same time!

Seating is limited, so click [here](#) to purchase your tickets (or make a donation if you are unable to attend). All are welcome (children and adults). Tickets can also be purchased by cash or check at the Parish Office.

- Golf and dinner \$100
- Not a golfer? Dinner only \$75
- Unable to attend, but want to help? Make a donation to St. Thomas Cares [here](#).

**Ticket sales end Thursday, March 3.**

### Highlights

- Heated golf bays ... Players hit balls to various targets in the field.
- Golfers are welcome to bring their own golf clubs or use the free clubs available at Top Golf.
- Buffet style Fajita Fiesta (See St. Thomas website for menu including soft drinks.)
- Cash bar for adult beverages

### Questions?

Please email [St.Thomasknights15822@gmail.com](mailto:St.Thomasknights15822@gmail.com) or call Al Cocconi at 630.661.7313.

**We (the Knights) can't wait to see you there!**

## Styrofoam Environmental Impact

Styrofoam cups and take-out containers are one of the biggest public health hazards. Styrofoam is littered more than any other waste product and fills up 30 percent of landfills globally. The worst part is that Styrofoam takes over 500 years to decompose and in the process, it leaches harmful chemicals into the environment. It is not only a dangerous air pollutant, but also poses a great threat to humans, the environment and animals.



### Styrofoam Recycle Collection

First Congregation UCC Church (25 E Benton Ave, Naperville) is collecting Styrofoam Sunday, March 13 and Monday, March 14 from 11:00 am to 1:00 pm. Bring Styrofoam to the First Congregational parking lot (on Center Street, right around the corner from Municipal Band Concert Park off Benton).

Please keep your packing peanuts separate from the rest of your Styrofoam. The peanuts are sent to stores that reuse them. For more information, contact Claudia Hackney at [Claudia.Hackney@sbcglobal.net](mailto:Claudia.Hackney@sbcglobal.net) or Susan Greenwood at [sgreenw288@gmail.com](mailto:sgreenw288@gmail.com).

## Sanctity of Life Waterleaf Miracle of the Month

"Mae" was already the mother to a young child and in a new relationship when she found herself pregnant. Her circumstances were very difficult. She did not want her situation to negatively affect her relationship with the father, her family and friends, or her young child.

Mae felt abortion would keep others from being hurt, embarrassed or inconvenienced. The father was shocked by the pregnancy, but willing to support Mae's decision. During each appointment, Mae was encouraged to renew her faith journey by leaning into her faith and inviting God into her decision. Through two ultrasounds, Mae could not see any way other than abortion to manage her circumstances. Leaving the clinic, she was certain she would terminate her pregnancy. During a nurse follow-up call a couple of weeks later, Mae revealed that they decided to parent!

Keep Waterleaf and Mae in your prayers. Your support brings the gift of life.



## Loaves and Fishes-2022 Tax Filing Assistance

Loaves and Fishes launched its free tax assistance program for low-income households (annual income of \$60,000 or less), February 7.

Eligible households can call for appointments available during set hours on Mondays, Wednesdays, Saturdays and Sundays for help on state and federal tax returns. Call for an appointment at 630.355.3663, x0.



**Loaves & Fishes**  
Community Services



## Food Donations for Care Pantry

*Drive-thru donations accepted Tuesday, February 8*

Bring donations to St. Thomas on Tuesday, March 8 from 9:00–10:00 am or 5:00–6:00 pm. Place the items in the trunk or the back of your vehicle, stay in your vehicle and we will remove the items for you. Items will be collected outside Door C, which is across from the labyrinth.

In order to serve our Care Pantry families in the best possible way, we are requesting items unavailable from the food bank and items we particularly need. Please bring the items listed below.

- Meat Meal in a Can
- Pasta
- Pasta Sauce
- Jello
- Canned Fruit
- Cereal
- Jiffy Mix
- Paper Towels/Kleenex

Thank you for your support. Consider being a drop-off location for people in your neighborhood and bringing a trunk load of food to St. Thomas.

# Service Commission — Pastoral Care

from grief  
to **GROWTH**



## Online Grief Support Group Starts March 7 Register Now

Are you struggling after a loved one's death? With continuing COVID issues, St. Thomas the Apostle Parish is now offering an online "Grief to Growth" group for adults who have lost a parent, spouse, adult child, sibling or friend.

Share your story, honor your loved one's memory, learn healthy strategies to move through sadness and move forward in a safe, confidential and supportive group.

We will meet on Zoom for six consecutive weeks — every Monday from March 7 to April 11 from 3:30 pm–5:00 pm.

We build a wonderful sense of community and so request a commitment for all six sessions. Paula Kosin, parishioner and Licensed Clinical Professional Counselor, will facilitate this group. You'll need an email address; internet access/WiFi; a personal computer or iPad/tablet; and be familiar with the basics of joining a Zoom meeting.

**REGISTER NOW** for this free program. (Group is limited to 8 participants.) Call or email Susan Kearney, Coordinator of the St. Thomas Behavioral Health Ministry, at 630.355.8980, x108 or [sdkearney@comcast.net](mailto:sdkearney@comcast.net).

Spell out your first and last name, phone number and email address.

If you feel the group is not for you right now, if you need other assistance or have questions please give Susan a call.

## From the Behavioral Health Ministry Self-Injury Awareness Day March 1, 2022

Self-injury is the act of deliberately harming your own body, such as cutting or burning yourself. It's typically not meant as a suicide attempt. Rather, this type of self-injury is a harmful way to cope with emotional pain, intense anger and frustration.

While self-injury may bring a momentary sense of calm and a release of tension, it's usually followed by guilt and shame and the return of painful emotions. Although life-threatening injuries are usually not intended, with self-injury comes the possibility of more serious and even self-aggressive actions.

### Signs and symptoms of self-injury may include:

- Scars, often in patterns
- Fresh cuts, scratches, bruises, bite marks or other wounds
- Wearing long sleeves or long pants, even in hot weather
- Statements of helplessness, hopelessness or worthlessness

### There's no one single or simple cause that leads someone to self-injure. In general, self-injury may result from:

- Poor Coping Skills — Self-injury is usually the result of an inability to cope in healthy ways with psychological pain.
- Difficulty managing emotions — The person has a hard time regulating, expressing or understanding emotions. Most people who self-injure are teenagers and young adults, although those in other age groups also self-injure. Self-injury often starts in the preteen or early teen years when emotions are more volatile and teens face increasing peer pressure, loneliness, and conflicts with parents or other authority figures.

### For Help:

Talk to someone you trust — such as a friend, loved one, doctor, spiritual leader, school counselor, nurse or teacher — who can help you take the first steps to a successful treatment. While you may feel ashamed and embarrassed about your behavior, you can find supportive, caring and nonjudgmental help.

If you have a friend or loved one who is self-injuring, you may be shocked and scared. Take all talk of self-injury seriously. Although you might feel that you'd be betraying a confidence, self-injury is too big a problem to ignore or to deal with alone. Here are some ways to help.

- **Your child:** You can start by consulting your pediatrician or other health care provider who can provide an initial evaluation or a referral to a mental health professional. Express your concern, but don't yell at your child or make threats or accusations.
- **Preteen or teenage friend:** Suggest that your friend talk to parents, a teacher, a school counselor or another trusted adult.
- **Adult:** Gently express your concern and encourage the person to seek medical and mental health treatment.

*For more information: Mayo Clinic [mayoclinic.org](http://mayoclinic.org)*



BEHAVIORAL HEALTH  
St. Thomas the Apostle

## From the Office of the Parish Nurse Health Tips: When a Fever Becomes an Emergency

Even when you are well, your body temperature varies, and that variation is normal. Doctors usually consider 98.6 F a healthy body temperature. But your normal temperature may differ by a degree or more. In the morning, your temperature is generally lower, and in the afternoon it's somewhat higher.

Often, a fever isn't anything to worry about, but sometimes a fever should be evaluated, especially if it's accompanied by other severe symptoms.

### Contact a doctor in any of the following situations:

- A child or adult with a temperature of 103 F
- A child or adult with a temperature of more than 101 F for more than 3 days
- An infant younger than 3 months with a rectal temperature of 100.4 F or higher
- An infant older than 3 months with a temperature of 102 F or higher

### Seek emergency medical care if any of these sign or symptoms accompany a fever:

- Severe headache
- Severe swelling of the throat
- Unusual skin rash
- Unusual eye sensitivity to bright light
- A stiff neck and significant neck pain when you bend your head forward
- Confusion or severe drowsiness
- Persistent vomiting or abdominal pain
- Difficulty breathing or chest pain
- Extreme listlessness, irritability or poor eye contact
- A seizure
- A bulging soft spot on a baby's head

Sometimes, a high fever can cause a seizure in an infant or a child. This is known as a febrile seizure. If this occurs, lay your child on his or her side, gently supporting the child's head, until the seizure ends.

Cool your child gradually, using a damp sponge or cool compress and lukewarm water. Don't immerse your child in a cold bath. Seek urgent medical attention. Most febrile seizures aren't dangerous, but fever accompanied by a seizure also could be a sign of a serious illness.

Fever itself isn't an illness, but it's often a sign of one. A fever tells you that something is happening inside your body. Most likely your body is fighting an infection caused by either a virus or a bacterium.

*Resource: Mayo Clinic Press*



FAITH COMMUNITY NURSE  
St. Thomas the Apostle



## Blood Drive

This is the last week to reserve a spot to donate blood.

Please consider becoming a link in the chain of life by donating blood at our next blood drive Saturday, March 5 from 10:00 am to 3:00 pm in the St. Thomas gym.

By giving up one hour of your day, you will save three lives!

Reserve a time slot on the Versiti website [here](#).

Also, to make the process easier, on the day of the Blood Drive, go to [versiti.org/versipass](https://www.versiti.org/versipass) to review educational material and complete the online questions. Bring the printed or mobile confirmation to your appointment.

With the severe blood shortage this is a great way to make a difference. Donate on March 5.

If you have any questions, contact Diane McQueen at [dcmqueen@stapostle.org](mailto:dcmqueen@stapostle.org) or 630.355.8980, x101.

## Blood Pressure Screening

Blood Pressure Screening is available next Sunday, March 6 after the 9:30 and 11:15 am Masses. The screening sites are the first office on the right (Deacon's office) and the second office on the right (Parish Nurse Office) as you enter the west wing of the Church.

No appointment or doctor's order needed.



# Stewardship and Administration

## The Week Ahead

### Monday, February 28

7:15–8:30 pm Middle School RE at All Saints Academy

### Tuesday, March 1

10:00–11:00 am Care Pantry Food Distribution, Outside

4:30–5:45 pm RE at St. Thomas, Ministry Center

7:00–8:30 pm Voices of Faith, Church

### Wednesday, March 2

9:15–11:15 am Wednesday Bible Study, Senior Center

5:15–7:00 pm RE Family Faith Activity, Gym

6:30–8:30 pm Pax Christi, Cana

7:00–8:30 pm St. Vincent de Paul, Lighthouse

### Thursday, March 3

9:15–11:15 am Thursday AM Bible Study, Senior Center

6:30–8:00 pm Life Meeting, Gym

7:30–9:00 pm Thursday PM Bible Study, Senior Center

### Friday, March 4

9:00 am–12:00 pm Adoration/Benediction, Church

7:00–8:00 pm Stations of the Cross, Church

### Saturday, March 5

8:30–9:45 pm Middle School RE at All Saints Academy

9:00–10:30 am Saturday Men's Group, Cana

10:00 am–3:00 pm Blood Drive, Gym

3:30–4:15 pm Reconciliation, Chapel

### Sunday, March 6

10:30 am–1:00 pm Blood Pressure Screening, West Wing

9:30–10:30 am Girl Scout Mass, Church

3:30–4:30 pm Middle School Mass, Church

4:30–5:45 pm Journey 1, Lighthouse

7:15–8:30 pm Journey 1, Ministry Center

## Smart Moves in Giving to St. Thomas

Some parishioners receive tax benefits from gifts to St. Thomas by donating stock or directing their IRA distributions to St. Thomas. Consult your tax adviser or broker/agent to see if these smart moves are right for you. We appreciate your support!

thank you

Please take the time to read the ads which make this bulletin possible. Help support these businesses, especially during this time, as they support St. Thomas the Apostle. Mention the bulletin when you patronize their establishments.

**Let them know they are appreciated!**

### Last weekend's stewardship of financial gifts

#### Weekly Sunday Offertory

February 13, 2022

Sunday Collection Offering\* \$11,018

Credit Card Online Giving (reported monthly) none this week

Automatic Direct Debit (5<sup>th</sup> and 20<sup>th</sup> each month) none this week

Mailed in and stock donations \$13,712

Total for the week \$24,730

\*Based on Collection Counters Reports prior to bank confirmation

Fiscal Year (7/1 to 6/30) \$1,167,368

Weekly Average 7/1/2021 to date \$35,375

Offertory Goal Year to date \$1,107,793

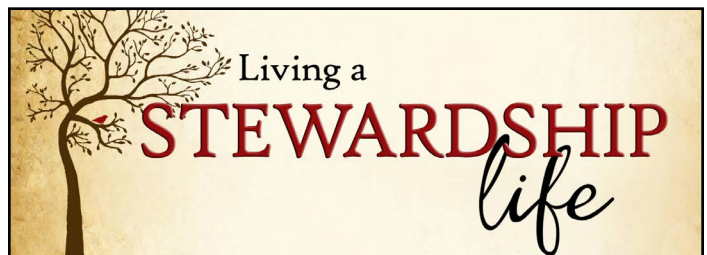
Over/(short) of goal to date \$59,575

Goal for Fiscal Year 7/1 to 6/30 \$1,745,600

Percent of Annual Sunday Offertory Goal 67%

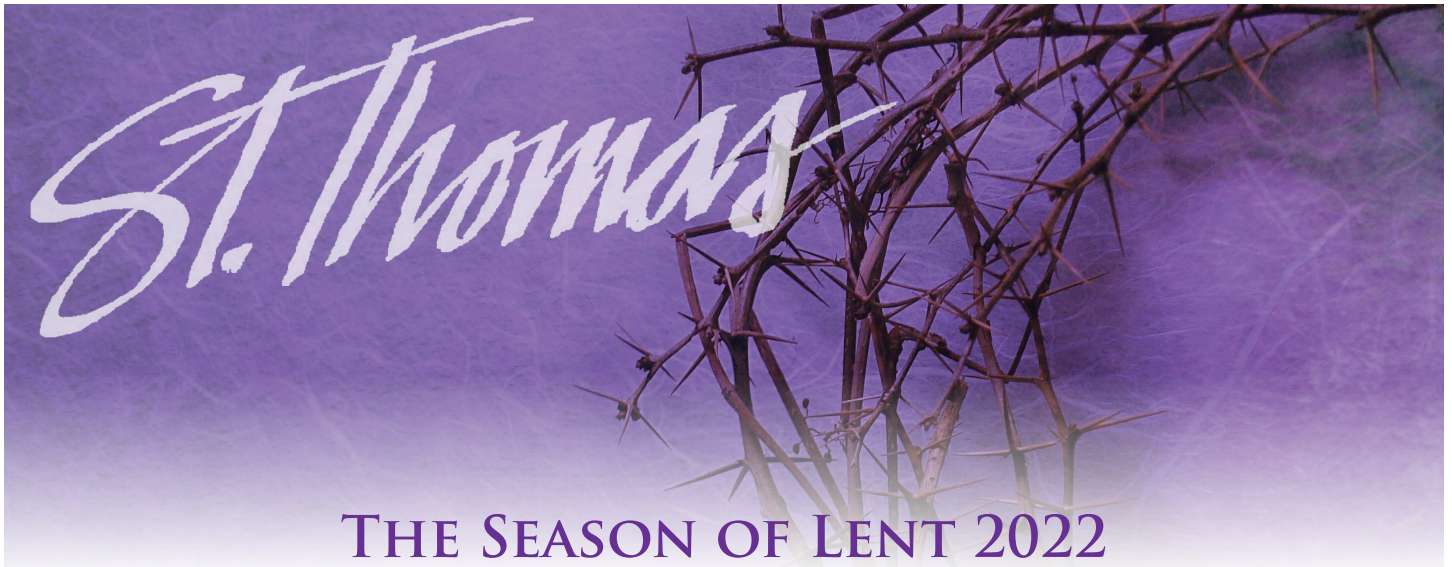
Remaining for this fiscal year goal \$578,232

This week, the Sunday collection is \$59,575 ahead of goal so far this year. Capital needs restricted gifts were \$1,050 this past week. We are grateful to those who recognize the need and responded.



In 1992, in their Pastoral Letter, *Stewardship: a Disciple's Response*, the United States Conference of Catholic Bishops stated, "sharing is not optional for Catholics who understand what being Church involves ... sharing is stewardship."

This is a concept we should think about as we are asked to participate in this year's Catholic Ministries Annual Appeal. Sharing our gifts should not stop at the boundaries of our parish, but be shared for the benefit of the entire Diocese of Joliet. Our parish benefits from the proceeds from the Appeal through our Religious Education program as well as our school, All Saints Catholic Academy. A few weeks ago we had a visit from one of our seminarians who shared the story of his journey with us. He benefits from the Appeal. Please remember these examples as you pledge to support this year's appeal.



Dear Parish Family,

Every Ash Wednesday, we hear the following in the first reading from the prophet Joel:

*“Even now, says the Lord, return to me with your whole heart, with fasting, and weeping, and mourning. Rend your hearts, not your garments and return to the Lord, your God; for gracious and merciful is He who is slow to anger, rich in kindness, and relenting in punishment.”*

Joel reminds us that our God is a God of mercy. We especially see God’s mercy in the Gospel of St. Luke which is often proclaimed during this Church year. Only in Luke do we hear the gospel of the Prodigal Son, which will be proclaimed on the Fourth Sunday of Lent, about a son who, even though he wasted his father’s money, was warmly welcomed home by his father. In fact, according to the gospel, when the father saw his son from a distance, he ran to meet him, embraced him and kissed him. Such is the way of our merciful God when we return to Him and ask for His mercy.

Then, in Luke’s description of Jesus’ suffering and death on a cross which will be proclaimed on Palm Sunday, we will hear Jesus pray the following that is only in Luke’s gospel; “Father, forgive them for they do not know what they are doing.”

Please note that, because of the COVID-19 pandemic, we will be observing some of the COVID protocols similar to last year.

As in past seasons of Lent, we will celebrate a parish mission. This year, we welcome Fr. Ed Shea from the Franciscan community who will lead us in our three-day parish mission titled, “Make Me a Channel of Your Peace,” beginning at 7:00 pm Sunday, March 27 through Tuesday, March 29. Our parish Lenten Reconciliation Service will take place the second night of the mission on Monday, March 28. For those who are unable to participate on March 28, the Sacrament of Reconciliation is offered every Saturday from 3:45-4:15 pm. Please note that there will not be any scheduled time for reconciliation/confessions on Holy Saturday, April 16.

Let us celebrate our Lord’s merciful love for us as He joins us on our Lenten journey to encourage us to believe that, as Pope Francis once said, “The name of God is mercy.”

In the Word,

Rev. Philip M. Danaher, Pastor

*For the complete schedule of all activities and services during Lent from Ash Wednesday through Easter Sunday, please see the back page.*

# STATIONS OF THE CROSS WITH EUCHARISTIC ADORATION

## Food Donations for Care Pantry

Drive-thru donations will be collected Tuesday, March 8 and Tuesday, April 5 from 9:00–10:00 am and 5:00–6:00 pm.

Food items most needed are:

- meat meal in a can
- jello
- pasta
- pasta sauce
- canned fruit
- cereal
- Jiffy mix
- paper towels/Kleenex

Place the items in the trunk or the back of your vehicle, stay in your vehicle and we will remove the items for you. Items will be collected outside Door C, which is across from the labyrinth.

## Social Justice Stations of the Cross

The Stations of the Cross “Toward Justice and Peace” will be posted on the St. Thomas website at [www.stapostle.org](http://www.stapostle.org). The stations follow the final journey of Jesus while highlighting 14 women and men who walked in his footprints, including St. Kateri Tekakwitha (Native American) and Archbishop Oscar Romero.

## Easter Ham Collection

The Easter ham collection is Palm Sunday weekend, April 9–10. The goal is 325 hams for the Naperville, Aurora and Joliet areas. The truck will be in front of the church. Volunteers will accept donated hams and monetary donations from 4:00–6:00 pm Saturday, April 9 and 7:30 am–12:30 pm Sunday, April 10.

## Fridays of Lent

7:00 pm | Church

The Way of the Cross has always been a powerful and popular part of the faith tradition and devotional life for Catholics throughout the ages. The early practice of Christians attempting to retrace and walk the path of Jesus has been a treasured way to commemorate the Passion and Death of Christ.

This year, St. Thomas the Apostle is adding Adoration of the Blessed Sacrament to the Stations of the Cross. Beginning worship with the Exposition of the Eucharist, Stations of the Cross will provide prayer for the period of Eucharistic Adoration. The evening will close with Benediction.

## March 4, March 18, April 1

Through the simple, intimate, yet powerful words of *Everyone's Way of the Cross*, those on the journey are invited to grow closer to Christ by embracing the mystery of suffering in the world. Music provides a transitional accompaniment between stations.

## March 11, March 25, April 8

The *Scriptural Stations of the Cross* are based on those celebrated by Saint Pope John Paul II on Good Friday in 1991. They are an alternative to the traditional stations as a way of more deeply reflecting on the Scriptural accounts of Christ's Passion. Prayerful silence accompanies the transition between stations.

## FAITH OPPORTUNITIES DURING LENT

### TAIZÉ PRAYER

**Mondays, March 7 and April 11**

7:00 pm | Church

Gather in prayer with other members of this faith community to worship in a Taize style — with scripture, song and silence.

### SACRAMENT OF RECONCILIATION

**Monday, March 28**

7:00 pm | Church

This opportunity for God's healing mercy is interwoven with our parish mission. Through this form of the Sacrament of Reconciliation, all gather in prayer and an examination of conscience as a community. Then those in attendance may receive penance and absolution after confession one-on-one with a priest.

### MID-DAY MEDITATION

**Tuesdays March 8, 15, 22, 29 and April 5, 12**

12:00–12:30 pm

Spend some time in silent prayer reflecting on the Paschal Mystery and entrusting to Jesus your cares, hopes and fears. His heart is waiting to embrace yours.

### LORD, MAKE ME AN INSTRUMENT OF YOUR PEACE

*A Parish Mission with Franciscan Father Ed Shea, OFM*

**Sunday, March 27–Tuesday, March 29**

Fr. Ed loves to tell stories, sing songs and celebrate the sacraments joyfully with God's people. He will invite the St. Thomas the Apostle community to the Mission by preaching at all Masses March 26–27. Mission presentations will occur at 7:00 pm Sunday through Tuesday and are based on the beloved Prayer of St. Francis.

**Sunday, March 27** “Where There Is Doubt ... Faith” (*will include Benediction*)

**Monday, March 28** “Where There Is Injury...Pardon”

(*will include the Parish Reconciliation Service*)

**Tuesday, March 29** “Where There Is Despair...Hope” (*will include Mass*)

# ASH WEDNESDAY FAMILY PRAYER SERVICE AND FAMILY FAITH ACTIVITY

**Wednesday, March 2**

4:30 pm | Church

Begin your Lenten journey at the Ash Wednesday Family Prayer Service. This service includes song, Scripture readings and the distribution of ashes.

Families are welcome to pick up a Family Lenten Calendar after the Family Prayer Service. For Elementary Religious Education Children, please see your child's Elementary Religious Education folder for special activities for you and your child(ren) to do during Lent.

## OPPORTUNITIES FOR MIDDLE SCHOOL STUDENTS AND FAMILIES

### MIDDLE SCHOOL FAMILY MASS

**Sunday, March 6**

3:30 pm | Church

Middle school families are invited to celebrate Mass together at 3:30 pm on March 6. Fr. Matt Lorenz will be the presider and homilist. Help is needed with this special liturgy. Middle school students can volunteer for various ministry roles by going to the volunteer sign-up on the St. Thomas website. Come, pray and celebrate together!

### TEENS WITH CHARACTER

**Sunday, March 13**

4:30-6:00 pm | St. Thomas Gym

Teens with Character encourages middle school youth to be the hands and feet of Christ. Come to Teens with Character on Sunday, March 13, to experience fellowship and explore practical ways to live our faith. Teens with Character meetings take place from 4:30-6:00 pm in the St. Thomas gym.

### LIVING STATIONS OF THE CROSS

**Good Friday, April 15**

12:00 pm | Church

Middle school students are invited to be part of the Living Stations of the Cross prayer service. The Stations are prayerfully 'acted out' with still poses. This is an opportunity to come to a deeper understanding of the gift of Christ's ultimate sacrifice for us. Practices will be held weekly beginning in mid-March. The day and time of practices will be decided based on the availability of the Stations volunteers. If you are interested or would like more information, contact Peggy Goralski at [pgoralski@stapostle.org](mailto:pgoralski@stapostle.org) or 630.355.8980, x123.

### DO-AT-HOME FAMILY FAITH ACTIVITY

Supply packets for a middle school do-at-home family faith activity will be available for pickup, from the Religious Education Office starting March 1. This packet will contain the supplies needed for a project that will help to mark the 40 days of Lent in a special way for your family. To reserve your packet of supplies, contact Peggy Goralski at [pgoralski@stapostle.org](mailto:pgoralski@stapostle.org) or 630.355.8980, x123.

### ASH WEDNESDAY AND HOLY WEEK PLAYLISTS

There are many online resources to help make the season of Lent more meaningful. A 'playlist' highlights several of these resources and includes links to articles, videos, music and prayer. There are resources for young and old alike! Be sure to take a look at the Ash Wednesday and Holy Week playlists. The Ash Wednesday playlist, 'Signed with Ashes', will be available beginning February 25. The Holy Week playlist, 'Sacred Journey, Sacred Days,' will be available as Holy Week approaches. You can check them out on the St. Thomas website.

### Family Stations of the Cross

Do you have 30 minutes? Families are invited to walk the Stations of the Cross inside or outside the church this year. (The outside stations start at the back corner of the parking lot.) A prayer guide is available to borrow, leading your family through each station. It is geared for children and families.

Please see the Religious Education office or the welcome desk in the Gathering Area to borrow a guide. (St. Thomas offices are open 8:30 am-4:30 pm Monday through Friday. The reception desk in the Gathering Area is staffed 9:00 am-8:00 pm Monday-Thursday; 9:00 am-4:30 pm Friday; and 9:00 am-1:00 pm Saturday.)

You may also schedule a time to walk the Stations by contacting Jenni or Geralyn in the Religious Education Office at [REAdmin@stapostle.org](mailto:REAdmin@stapostle.org) or 630.305.6318 or Lorraine Katz at [lkatz@stapostle.org](mailto:lkatz@stapostle.org).

# LENTEN SCHEDULE

Monday–Saturday: 8:30 am Mass | Wednesday: 6:30 am Communion Service

## MARCH

- 2** Ash Wednesday  
6:30 am Communion Service w/ Distribution of Ashes  
8:30 am Mass\*\*  
12:00 pm Liturgy of the Word w/ Distribution of Ashes  
4:30 pm Family Prayer Service w/ Distribution of Ashes  
7:00 pm Mass
- 4** 7:00 pm Stations of the Cross w/ Eucharistic Adoration
- 6** 3:30 pm Middle School Family Mass
- 7** 7:00 pm Lent Taizé prayer\*
- 8** 12:00 pm Mid-Day Meditation
- 8** 9:00–10:00 am and 5:00–6:00 pm  
Drive-thru Food Donations for Care Pantry
- 11** 7:00 pm Stations of the Cross w/ Eucharistic Adoration
- 13** 4:30 pm Teens with Character
- 15** 12:00 pm Mid-Day Meditation
- 18** 7:00 pm Stations of the Cross w/ Eucharistic Adoration
- 22** 12:00 pm Mid-Day Meditation
- 25** 7:00 pm Stations of the Cross w/ Eucharistic Adoration
- 27–29** Parish Mission, “Make me a channel of your peace”
- 27** “Where There Is Doubt...Faith”  
(will include Benediction)
- 28** “Where There Is Injury ... Pardon”  
(will include the Parish Reconciliation Service)
- 29** “Where There Is Despair ... Hope”  
(will include Mass)
- 28** 7:00 pm Lenten Reconciliation service
- 29** 12:00 pm Mid-Day Meditation

## APRIL

- 1** 7:00 pm Stations of the Cross w/ Eucharistic Adoration
- 5** Easter Flower contributions due
- 5** 9:00–10:00 am and 5:00–6:00 pm  
Drive-thru Food Donations for Care Pantry
- 5** 12:00 pm Mid-Day Meditation
- 8** 7:00 pm Stations of the Cross w/ Eucharistic Adoration
- 9–10** Easter Ham Collection

## HOLY WEEK SERVICES

### Palm Sunday of the Passion of the Lord

*Saturday, April 9 — Mass of Anticipation*

4:30 pm Mass\*\*

*Sunday, April 10*

7:30 am Mass

9:30 am Mass

11:30 am Mass

### Monday, April 11–Wednesday, April 13

8:30 am Mass

### Monday, April 11

7:00 pm Holy Week Taizé prayer\*

### Tuesday, April 12

12:00 pm Mid-Day Meditation

### Thursday of Holy Week (Holy Thursday)

*Thursday, April 14*

**NO** 8:30 am Mass

7:00 pm Mass of the Lord’s Supper\*\*

*Adoration of the Blessed Sacrament will follow the conclusion of the Mass, ending with Night Prayer at 10:00 pm.*

### Friday of the Passion of the Lord (Good Friday)

*Friday, April 15*

**NO** 8:30 am Mass

12:00 pm Living Stations of the Cross

*Dramatized by the youth of St. Thomas the Apostle.*

3:00 pm Celebration of the Passion of the Lord\*\*

*Liturgy includes communal adoration of the Holy Cross and distribution of the Eucharist.*

### Holy Saturday

*Saturday, April 16*

**NO** 8:30 am Mass

12:00 pm Blessing of Easter Food baskets

*Outdoor blessing — in front of Gathering Area doors*

*No 3:30 pm Reconciliation or 4:30 pm Mass*

7:30 pm The Easter Vigil in the Holy Night\*\*

### Easter Sunday of the Resurrection of the Lord

*Sunday, April 17*

7:30 am Mass

9:00 am Mass\*\*

10:30 am Mass

12:00 pm Mass

*Weekday Mass schedule resumes Monday, April 18*

**All liturgies take place in the Church space. The Gym and Chapel are not being used at this time.**

(\*) denotes that liturgy will be livestreamed

(\*\*) denotes that liturgy will be livestreamed and Holy Communion will be distributed in the parking lot.

With restrictions imposed due to the pandemic, please note the following:

- Face masks are required for all people over the age of 2 regardless of vaccination status
- Respect social distancing of an arms-length from people not in your household
- A pew section with a 6 ft. social distancing requirement is available.
- Refrain from physical contact with others not in your household. This includes during the Lord’s Prayer and the Sign of Peace.

See <https://www.stapostle.org/things-to-know-before-returning-to-mass/> for more information on safety procedures.



**Dispensation from Mass is still in effect in the Diocese of Joliet due to the pandemic.**

**Checked These Listings Lately? Thank You to Our Advertisers!**

Make it a habit to check these advertisers when you need a product or a service.  
And when you purchase, be sure to mention you saw their ad in the St. Thomas bulletin!

**SUPPORT THE ADVERTISERS  
THAT SUPPORT OUR COMMUNITY**



				<p><b>BORTER</b> <b>HEATING &amp; COOLING</b></p>  <p><b>24 Hour Service</b></p> <p><b>(630) 668-5885</b></p>
<p>Please Cut Out This "Thank You Ad" and Present It The Next Time You Patronize One of Our Advertisers</p> <p><b>Thank You</b></p> <p>Thank you for advertising in our church bulletin. I am patronizing your business because of it!</p>			<p><b>Naper Auto Works</b> <i>Your One Stop Shop Since 1977</i></p>	
			 <p>320 N. Mill St. Naperville, IL 60540 <b>(630) 420-2886</b></p>	

**WHY ADVERTISE  
IN YOUR LOCAL  
CHURCH BULLETIN?**

J.S. Paluch will create, produce and print your ad for less than you'd spend elsewhere. They help you reach consumers at extremely affordable rates and offer options to advertise effectively and keep pace with market change.

If you own a business or know of a local business that might like to support your local Catholic parish by advertising in its parish bulletin, please contact J.S. Paluch. Grow your business by advertising in the church bulletin and create strong connections with your target audience. Benefits include:

**GREAT COVERAGE - 97%** of all households attending church take at least one church bulletin home every Sunday.

**GREAT VALUE - 70%** of all households are aware of and look at the advertising in the church bulletin and 68% of households surveyed when making a choice between businesses are inclined to choose the one who advertised in the church bulletin.

**GREAT LOYALTY - 41%** of households do business with a company specifically because they are advertising in the church bulletin.

**GREAT PRODUCT - 62%** of households keep the church bulletin the entire week as reference.

*Advertise With Us!*



**Learn More About Advertising In Your Parish Bulletin**  
Call us at **1-800-621-5197**  
Email: [sales@jspaluch.com](mailto:sales@jspaluch.com)

**1ST CHOICE**  
SENIOR HOMECARE INC.  
7300 N. Cicero Ave., Ste. 212  
847-329-5122  
If Care is what you need, we are here to Help!  
We offer live-in and hourly service for elderly!

Consider Remembering  
Your Parish in Your Will.  
For further information,  
please call the Parish Office.

**VOEGTLE'S**  
*Auto Service*  
28 W. 224 WARRENVILLE RD.  
WARRENVILLE, IL 60555  
COMPLETE AUTO REPAIR  
SINCE 1975  
CHARLES VOEGTLE  
JOE VOEGTLE  
393-1436

**SIZZALY PIZZA**  
(630) 995-3335  
1220 W Ogden Ave.  
Naperville, IL 60563

**\$4 OFF XL PIZZA**  
Family Special  
Limit one. Limited time only.  
Must present coupon.

**www.sizzaly.com**

**If You Live Alone You Need MDMedAlert!**

24 Hour Protection at HOME and AWAY!

- ✓ Ambulance
- ✓ Police ✓ Fire
- ✓ Friends/Family

Solutions as Low as \$19.<sup>95</sup> a month  
FREE Shipping  
FREE Activation  
NO Long Term Contracts

CALL NOW! 800.809.3352

**MDMedAlert**  
Safe-Guarding America's Seniors Nationwide!

This Button SAVES Lives!  
As Shown GPS,  
Lowest Price Guaranteed!  
GPS Tracking w/Fall Detection  
Nationwide, No Land Line Needed  
EASY Set-up, NO Contract  
24/7 365 Monitoring in the USA

Quality Work - Reasonable Prices

**DEMMS PLUMBING & SEWER**

Ask for a PARISHIONER DISCOUNT

Lic# 055-044826  
630.991.3641 EMERGENCY SERVICE  
www.demmsplumbing.com

*Your ad could be in this space!*

**Ed the Plumber**  
**Ed the Carpenter**  
708.652.1444  
Best Work • Best Rates  
PARISHIONER DISCOUNT

Catholic Cruises and Tours and The Apostleship of the Sea of the United States of America  
Take your FAITH ON A JOURNEY.  
Call us today at 860-399-1785 or email eileen@CatholicCruisesandTours.com  
www.CatholicCruisesandTours.com

**Ed the Plumber**  
**Ed the Carpenter**  
708.652.1444  
Best Work • Best Rates  
PARISHIONER DISCOUNT

**FINDaPARISH.com**  
Check It Out Today!

**The Most Complete Online National Directory of Catholic Parishes**

**Feze ROOFING**  
Residential • Commercial Industrial  
Lic. #104000585  
FREE ESTIMATES 630.530.5944  
111 Maple Ave., Elmhurst  
FEZEROFING.COM

Protecting Seniors Nationwide

Medical Alert System

\$29.95/Mo. billed quarterly

- One Free Month
- No Long-Term Contract
- Price Guarantee
- Easy Self Installation

Call Today! Toll Free 1.877.801.8608

Two beautiful locations:  
44 S. Mill Street • Naperville, IL  
(630) 355-0213 • Historic Downtown  
15219 S. Joliet Rd. • Plainfield, IL  
(815) 436-9221 • Rte. 59 & Rte. 30

**100th Anniversary**

**f**

**Friedrich Jones**  
Funeral Homes & Cremation Services  
www.friedrichjones.com

Dave Jones, Parishioner  
Stephanie Jones-Kastelic • Ray Jones

**catholicmatch® Illinois**

CatholicMatch.com/myIL

Get this weekly bulletin delivered by email - for FREE!

Sign up here:  
**www.jspaluch.com/subscribe**  
Courtesy of J.S. Paluch Company, Inc.

Say Good-bye to Clogged Gutters!

Receive a \$50 restaurant gift card with in-home estimate & free gutter inspection!

**\$99 Installation\***

Call today for your FREE estimate and in-home demonstration  
**CALL NOW 708-462-6373**

LeafGuard® is guaranteed never to clog or we'll clean it for FREE!

- Seamless, one-piece system keeps out leaves, pine needles, and debris
- Eliminates the risk of falling off a ladder to clean clogged gutters
- Durable, all-weather tested system not a flimsy attachment

**ENGLERT LeafGuard®**  
Get it. And forget it.™

**PHIL WALZ PLUMBING, INC.**

Specialists In Bath Remodeling  
Established 1967  
1340 W. Ogden, Naperville  
(630) 355-0080 Lic# 058-062118

**ONE PARISH**

Grow in your faith, find a Mass, and connect with your Catholic Community with OneParish!

Download Our Free App or Visit  
**https://www.oneparish.com**

**B & L Auto Body Inc.**

Free Estimates  
Insurance Work  
Expert Refinishing  
Complete Collision Repair

1340 W. Ogden Ave.  
Naperville  
Larry Frank  
355-0865

Funeral Service **BK** On-Site Crematory

**Beidelman-Kunsch**  
FUNERAL HOMES & CREMATORY, LTD  
Family Owned & Operated Since 1861  
JOHN W., JOHN L. & JOSEPH O. KUNSCH, DIRECTORS  
516 S. Washington St.  
Historic Downtown Naperville  
630.355.0264

24021 Royal Worlington Dr.  
Rt. 59/South Naperville  
630.922.9630  
**www.BeidelmanKunschFH.com**